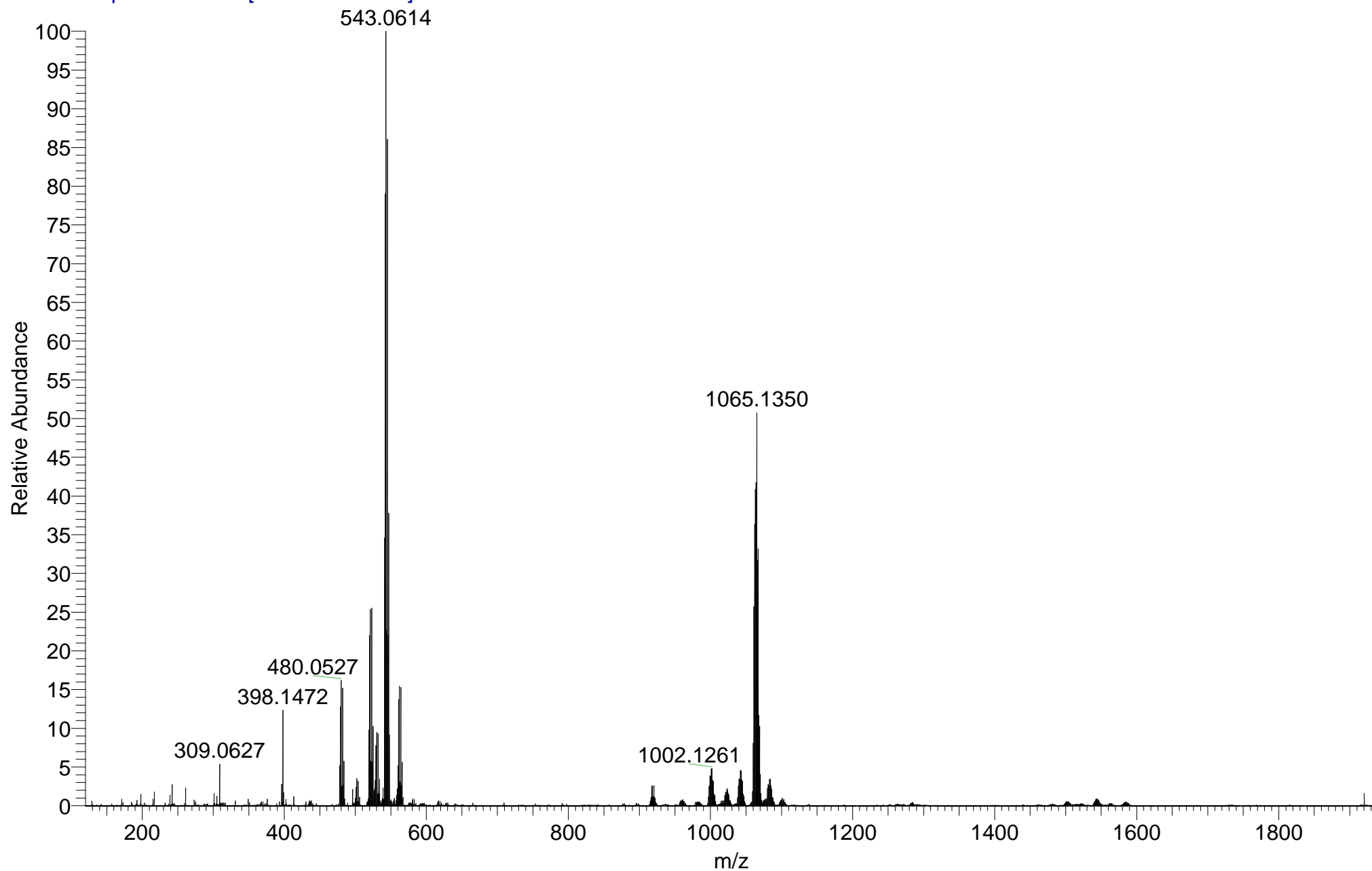
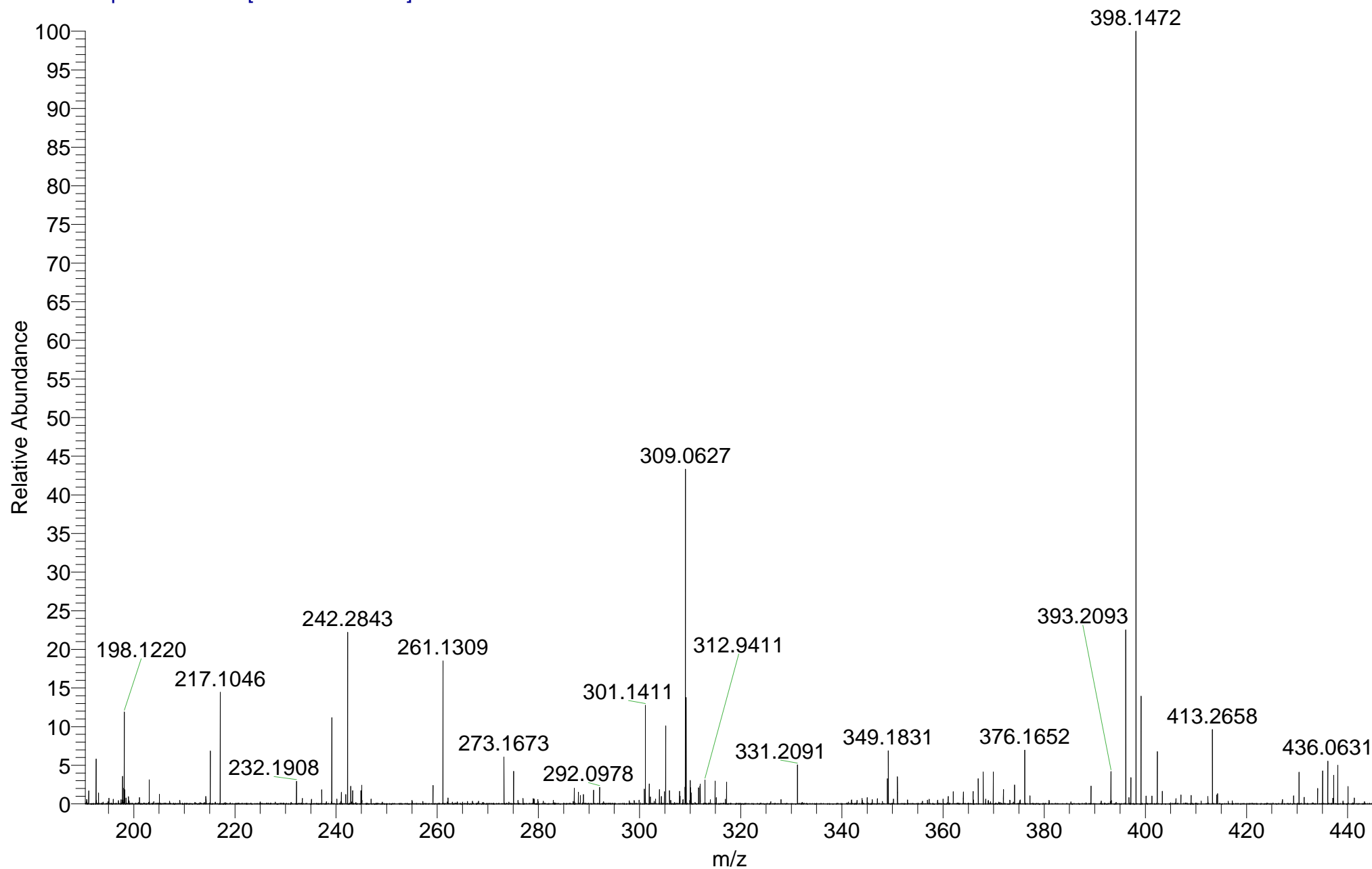


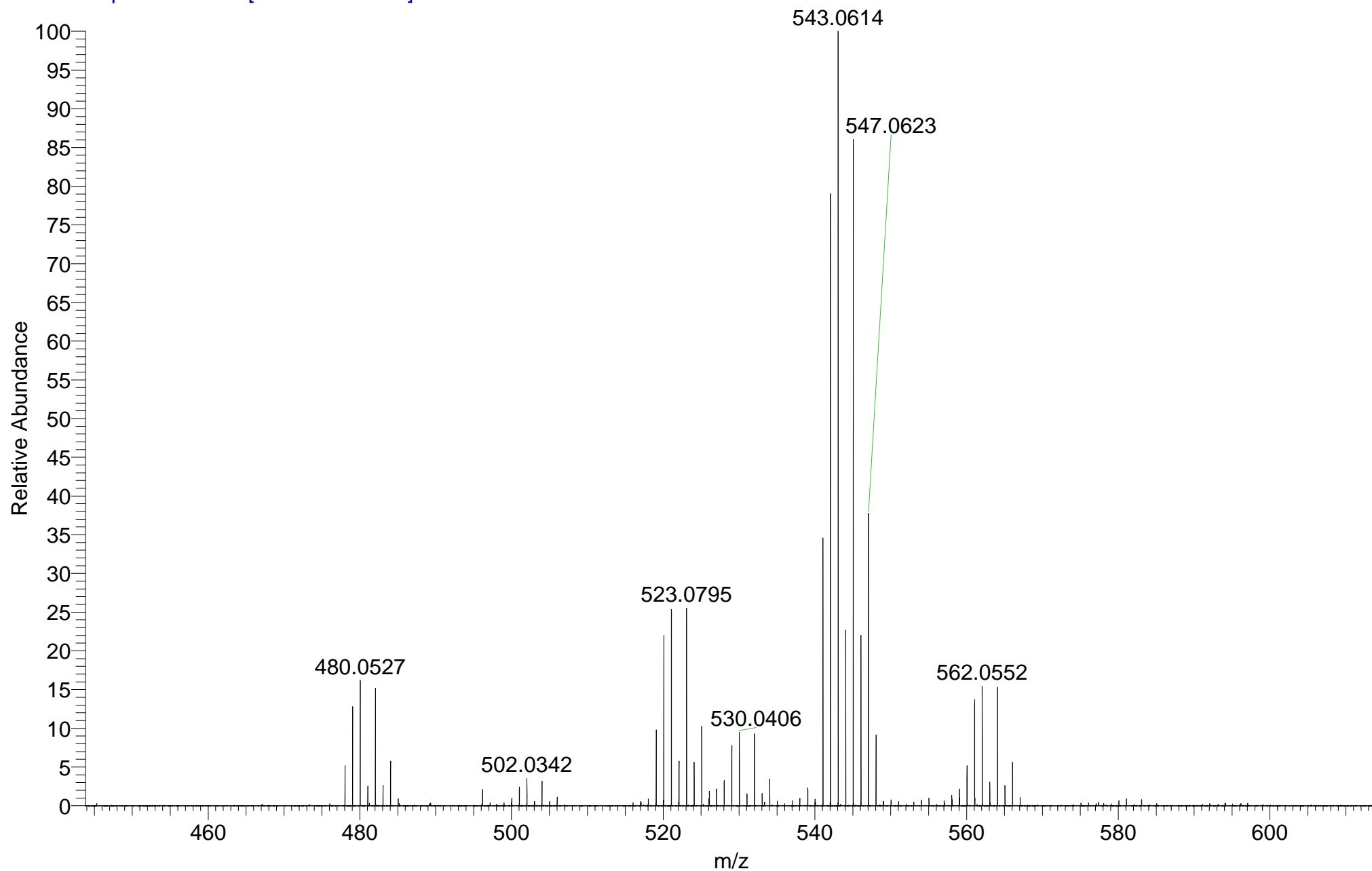
IMPBUL_TX4LY_50438 #36-56 RT: 0.66-1.04 AV: 16 SM: 7G NL: 5.03E6
T: FTMS + p NSI Full ms [120.00-1935.00]



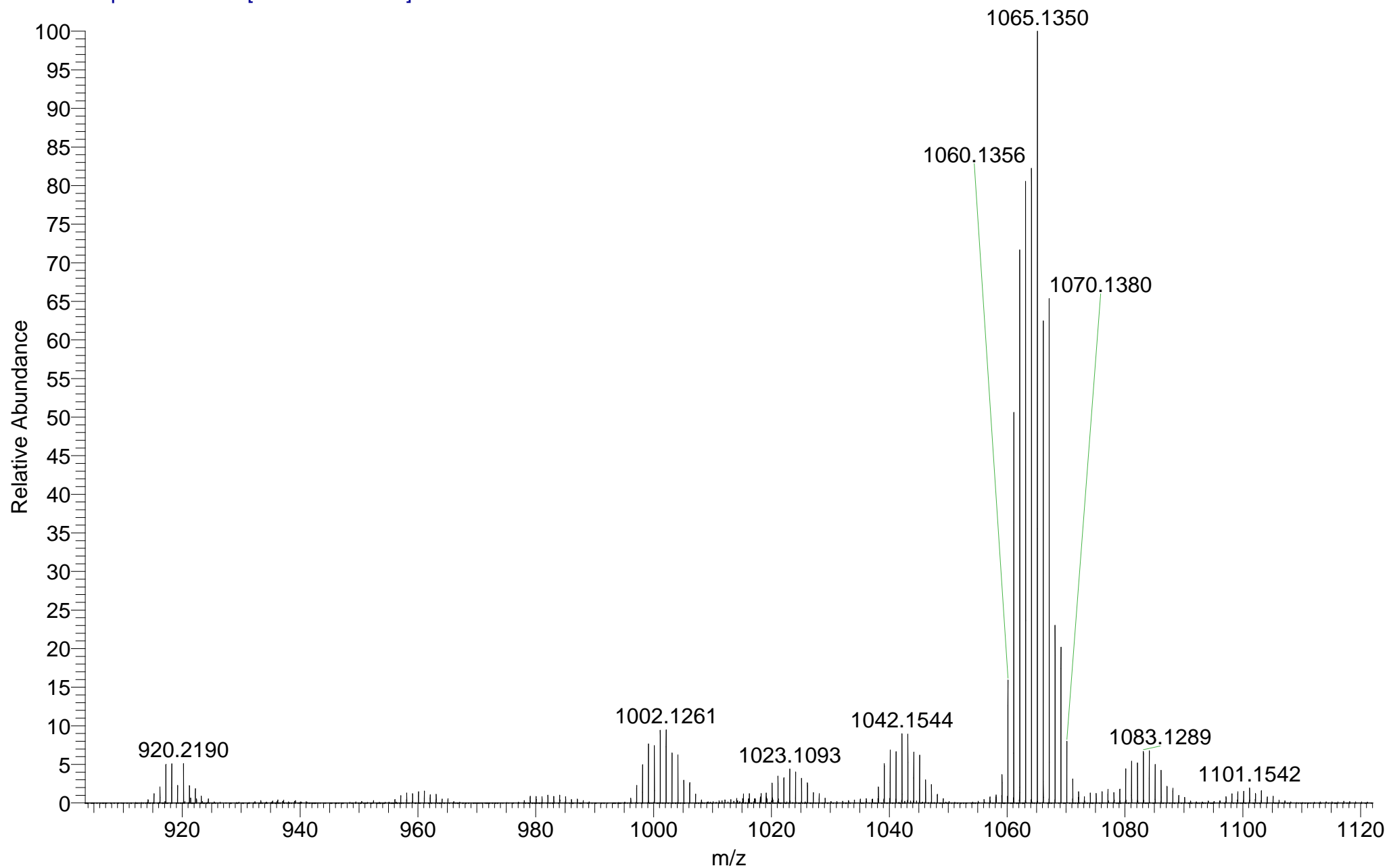
IMPBUL_TX4LY_50438 #36-56 RT: 0.66-1.04 AV: 16 SM: 7G NL: 6.21E5
T: FTMS + p NSI Full ms [120.00-1935.00]



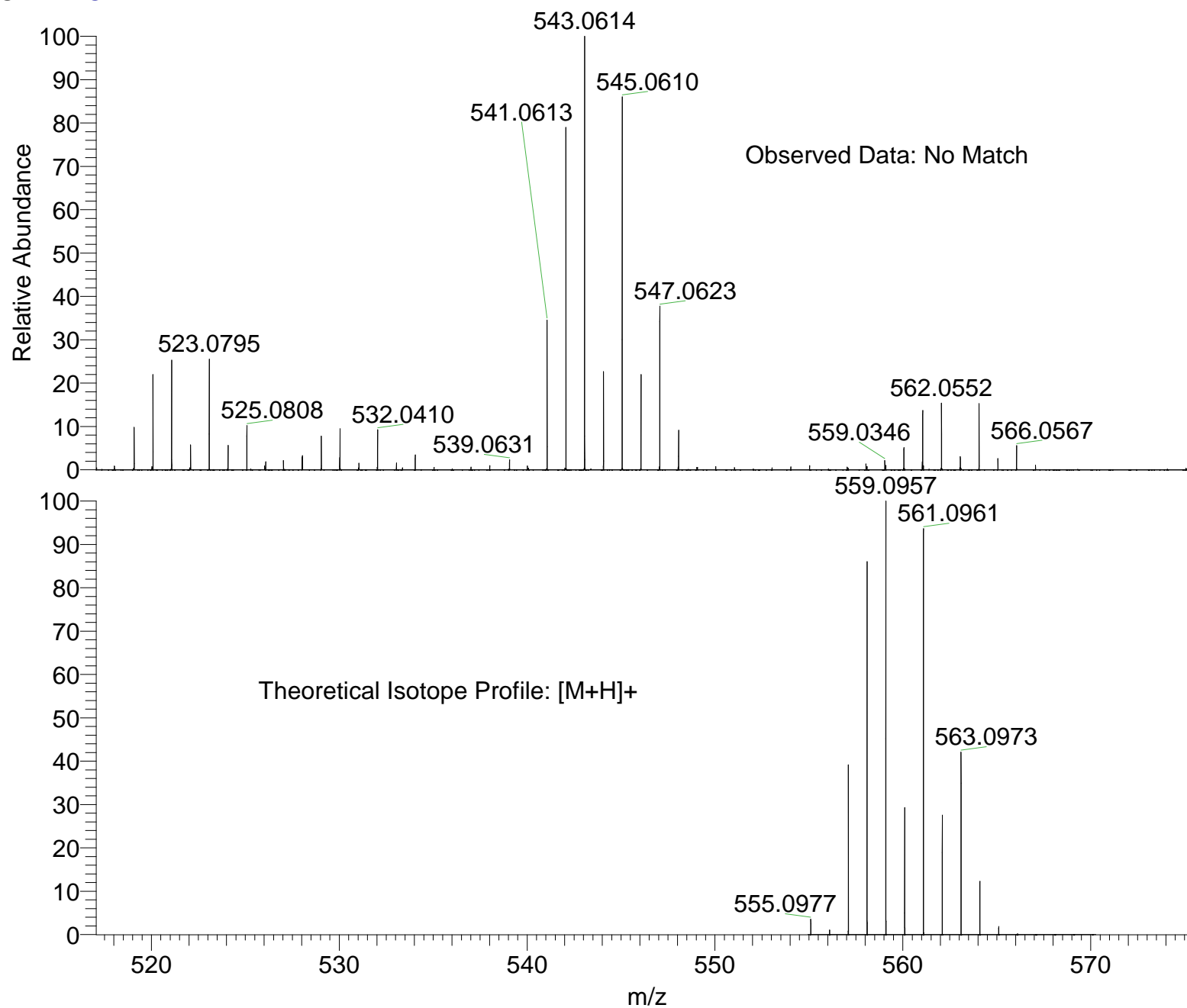
IMPBUL_TX4LY_50438 #36-56 RT: 0.66-1.04 AV: 16 SM: 7G NL: 5.03E6
T: FTMS + p NSI Full ms [120.00-1935.00]



IMPBUL_TX4LY_50438 #36-56 RT: 0.66-1.04 AV: 16 SM: 7G NL: 2.55E6
T: FTMS + p NSI Full ms [120.00-1935.00]



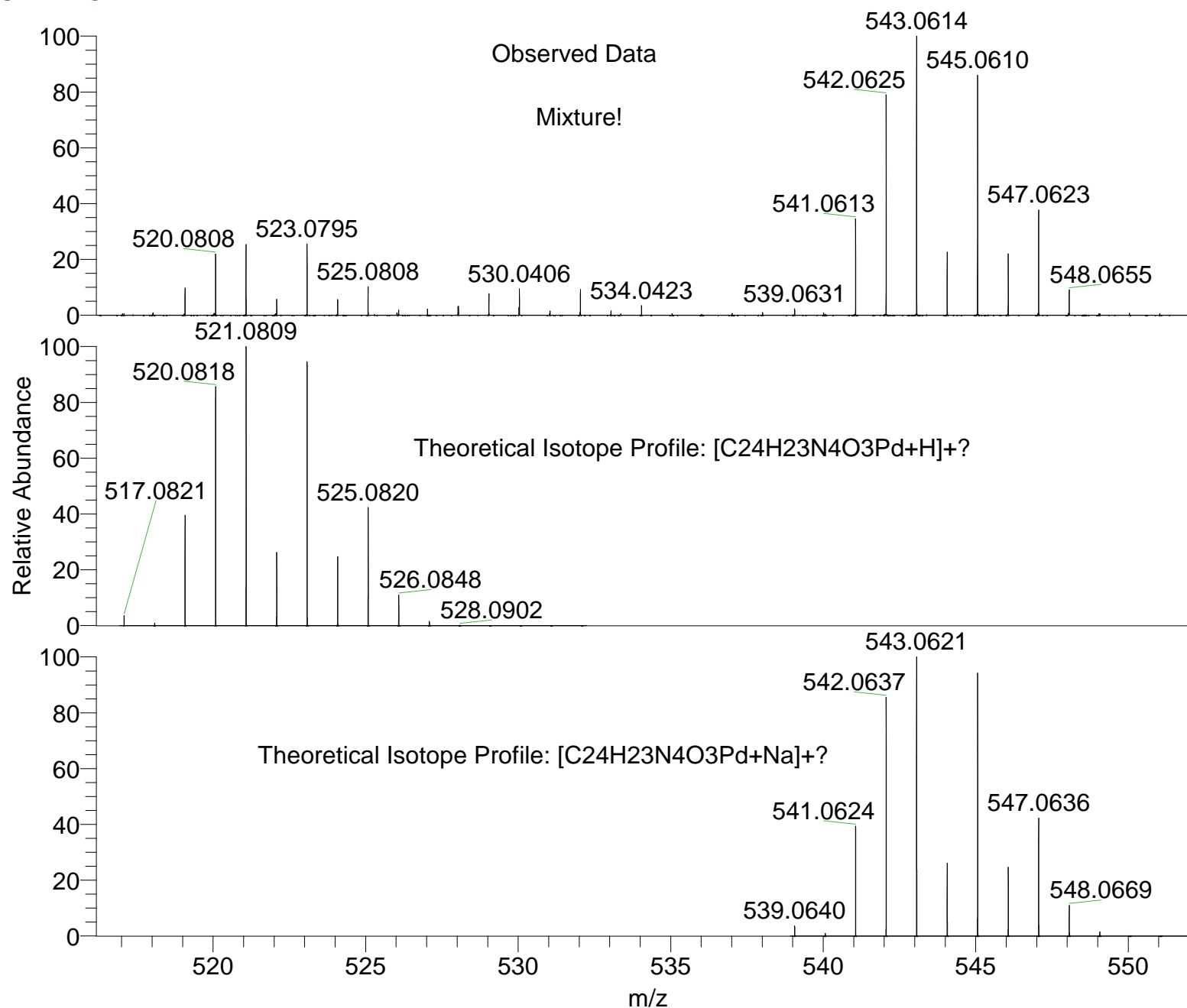
SM: 7G



NL:
5.03E6
IMPBUL_TX4LY_50438#36-56
RT: 0.66-1.04 AV: 16 T:
FTMS + p NSI Full ms
[120.00-1935.00]

NL:
4.87E3
C₂₇ H₂₄ N₄ O₃ PdH:
C₂₇ H₂₅ N₄ O₃ Pd₁
p (gss, s /p:40) Chrg 1
R: 100000 Res .Pwr . @FWHM

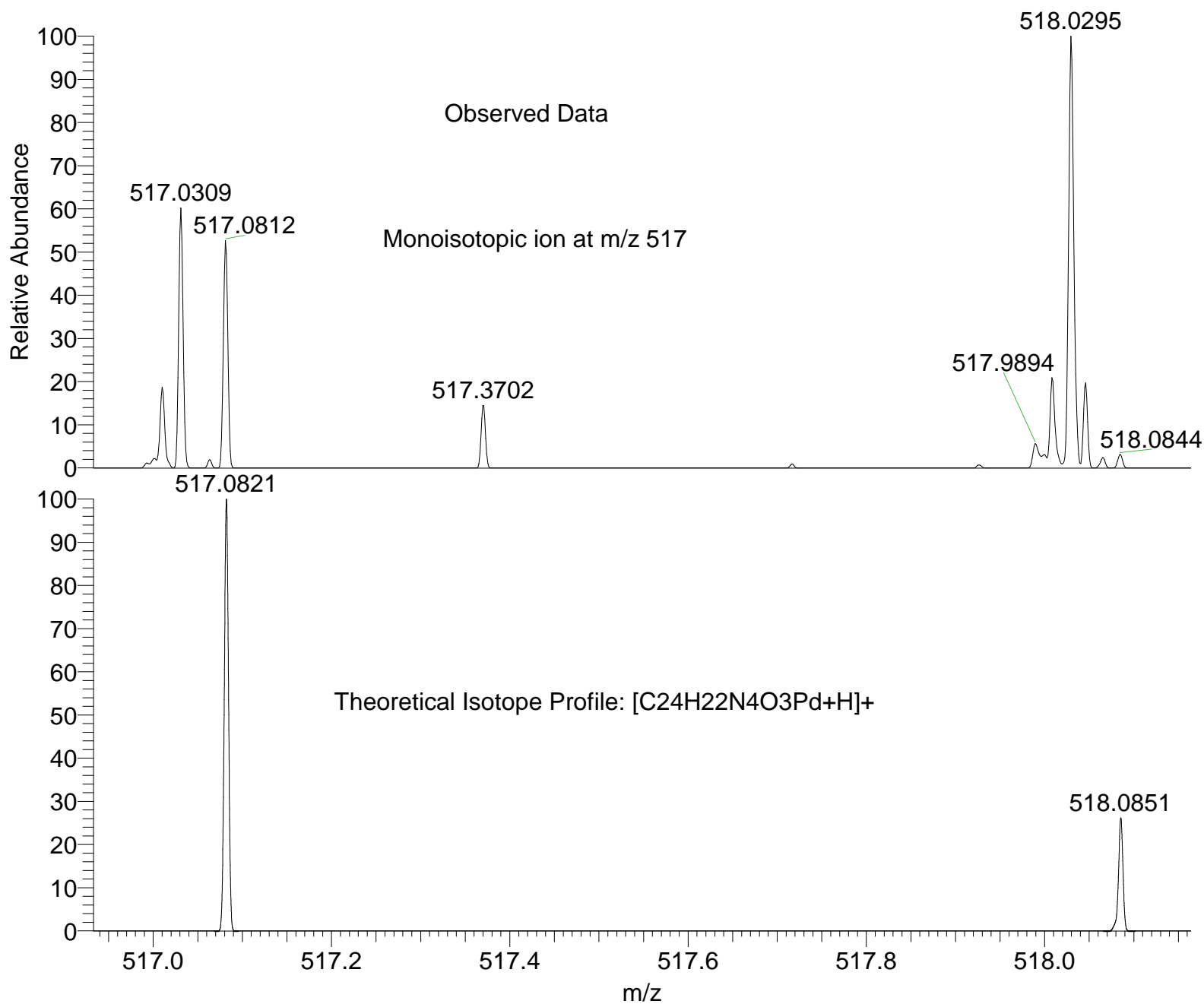
SM: 7G



NL:
5.03E6
IMPBUL_TX4LY_50438#38-56
RT: 0.66-1.04 AV: 16 T:
FTMS + p NSI Full ms
[120.00-1935.00]

NL:
4.98E3
C₂₄H₂₂N₄O₃PdH:
C₂₄H₂₃N₄O₃Pd₁
p (gss, s /p:40) Chrg 1
R: 100000 Res .Pwr . @FWHM

NL:
5.00E3
C₂₄H₂₂N₄O₃PdNa:
C₂₄H₂₂N₄O₃Pd₁Na₁
p (gss, s /p:40) Chrg 1
R: 100000 Res .Pwr . @FWHM



NL:
4.45E4
IMPBUL_TX4LY_50438#38-56
RT: 0.66-1.04 AV: 16 T:
FTMS + p NSI Full ms
[120.00-1935.00]

NL:
1.80E2
C₂₄H₂₂N₄O₃PdH:
C₂₄H₂₃N₄O₃Pd₁
p (gss, s /p:40) Chrg 1
R: 100000 Res .Pwr . @FWHM

Isotope: Min. .. Max.
 14 N 0....15
 16 O 0....20
 12 C 0....80
 1 H 0....100
 23 Na 0....0
 102 Pd 0....1
 Tolerance Window: +- 5.00 ppm
 Db/Ring Equiv: -10.. 500
 Fits: 300

N-Rule: Do not use
 Charge: 1

Mass	Theoretical Mass	Delta [ppm]	RDB	Composition
517.0812	517.0812	-0.1	3.5	C ₈ H ₂₃ O ₈ N ₁₂ ¹⁰² Pd ₁
	517.0812	-0.1	-2.0	C ₉ H ₂₉ O ₁₃ N ₅ ¹⁰² Pd ₁
	517.0811	0.3	11.0	C ₁₈ H ₁₉ O ₁₅ N ₃
	517.0811	0.3	16.5	C ₁₇ H ₁₃ O ₁₀ N ₁₀
	517.0816	-0.7	4.0	C ₃ H ₁₅ O ₁₆ N ₁₅
	517.0807	0.9	10.5	C ₂₃ H ₂₇ O ₇ ¹⁰² Pd ₁
	517.0807	0.9	16.0	C ₂₂ H ₂₁ O ₂ N ₇ ¹⁰² Pd ₁
	517.0806	1.2	29.0	C ₃₁ H ₁₁ O ₄ N ₅
	517.0819	-1.3	34.0	C ₃₂ H ₇ N ₉
	517.0819	-1.3	28.5	C ₃₃ H ₁₃ O ₅ N ₂
	517.0821	-1.7	15.5	C ₂₄ H ₂₃ O ₃ N ₄ ¹⁰² Pd ₁
	517.0802	1.9	-1.0	C ₂ H ₁₉ O ₂₀ N ₁₁
	517.0824	-2.3	21.5	C ₁₈ H ₉ O ₆ N ₁₄
	517.0824	-2.3	16.0	C ₁₉ H ₁₅ O ₁₁ N ₇
	517.0824	-2.3	10.5	C ₂₀ H ₂₁ O ₁₆
	517.0799	2.5	-7.0	C ₈ H ₃₃ O ₁₇ N ₁ ¹⁰² Pd ₁
	517.0799	2.5	-1.5	C ₇ H ₂₇ O ₁₂ N ₈ ¹⁰² Pd ₁
	517.0799	2.5	4.0	C ₆ H ₂₁ O ₇ N ₁₅ ¹⁰² Pd ₁
	517.0826	-2.7	3.0	C ₁₀ H ₂₅ O ₉ N ₉ ¹⁰² Pd ₁
	517.0826	-2.7	-2.5	C ₁₁ H ₃₁ O ₁₄ N ₂ ¹⁰² Pd ₁
	517.0797	2.9	11.5	C ₁₆ H ₁₇ O ₁₄ N ₆
	517.0797	2.9	17.0	C ₁₅ H ₁₁ O ₉ N ₁₃
	517.0829	-3.3	3.5	C ₅ H ₁₇ O ₁₇ N ₁₂
	517.0794	3.5	11.0	C ₂₁ H ₂₅ O ₆ N ₃ ¹⁰² Pd ₁
	517.0794	3.5	16.5	C ₂₀ H ₁₉ O ₁ N ₁₀ ¹⁰² Pd ₁
	517.0792	3.8	24.0	C ₃₀ H ₁₅ O ₈ N ₁
	517.0792	3.8	29.5	C ₂₉ H ₉ O ₃ N ₈
	517.0832	-3.9	33.5	C ₃₄ H ₉ O ₁ N ₆
	517.0834	-4.3	15.0	C ₂₆ H ₂₅ O ₄ N ₁ ¹⁰² Pd ₁
	517.0789	4.5	-0.5	H ₁₇ O ₁₉ N ₁₄
	517.0837	-4.9	21.0	C ₂₀ H ₁₁ O ₇ N ₁₁

Mass	Theoretical Mass	Delta [ppm]	RDB	Composition
	517.0837	-4.9	15.5	C ₂₁ H ₁₇ O ₁₂ N ₄